

Use Core FTP Client to Connect to Student FTP Server

You must connect to the campus virtual private network (VPN) before connecting to student FTP server (ceweb2.uml.edu). For more information on UML VPN configuration go to <https://www.uml.edu/it/services/get-connected/remote-access> or contact the Helpdesk at 978-934-4357.

Core FTP Lite is a File Transfer Protocol program available for free.

If you know how to download and install programs, skip to the section: **Uploading files using Core FTP Lite**

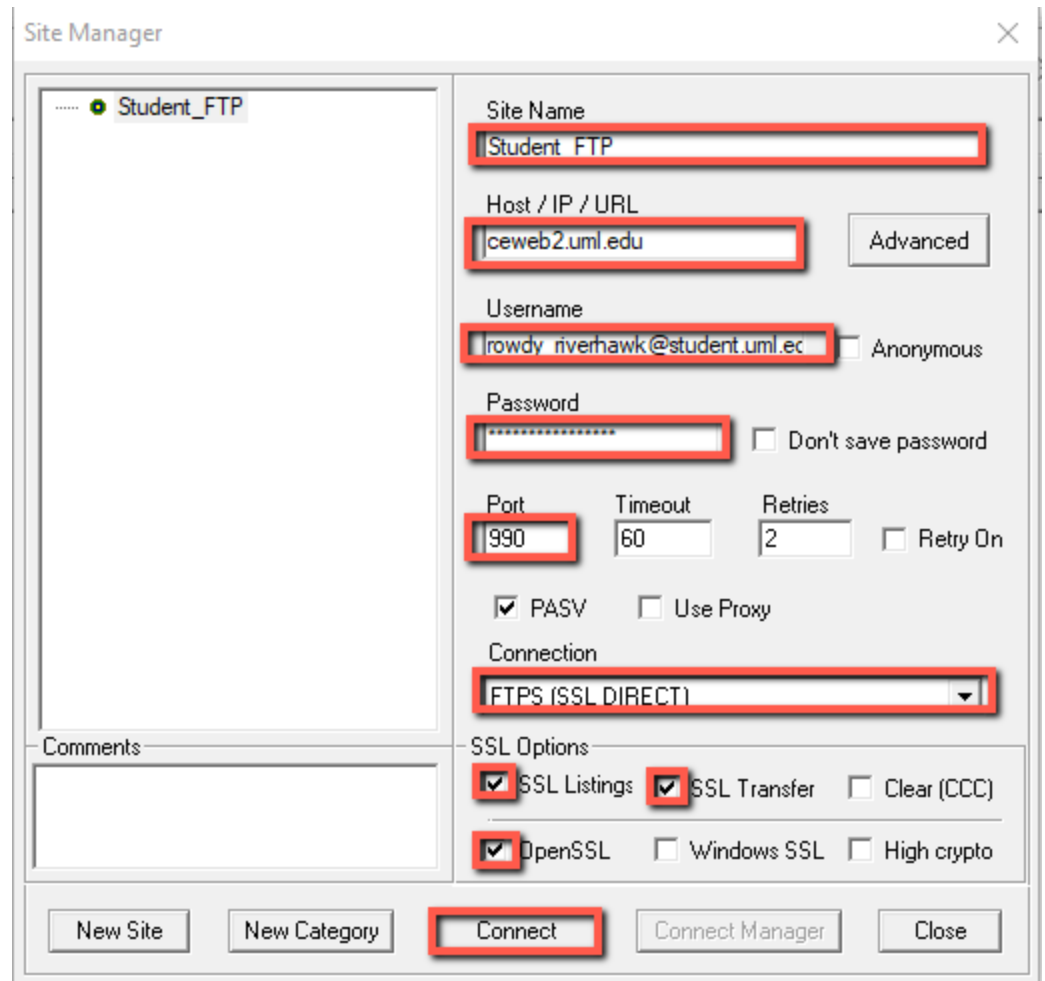
Install Core FTP Lite

1. Download [Core FTP Lite](#).
2. Select "Save this file."
3. Save the file to your desktop.
Please note: If you cannot choose where to save the file, it will be located in the your downloads folder.
4. Click "Close" when the download is complete.
5. To install the program, double-click its icon located on the desktop or in the download folder of your computer.
6. Proceed through the installation process.

Configuring Core FTP Lite

1. Start the program by selecting Start > All Programs > Core FTP Lite.
Please note: if you are using Windows 8.1, navigate to the START screen by selecting the icon on the lower left part of the screen. Type "Core FTP" in the search box. Select "Core FTP LE" in the search results and pin it to your screen or the task bar. Going forward the program will be available to start from your chosen location. Select the Core FTP LE icon to start the program.
2. Setup a server profile in the Site Manager box.

3. Type the following information into the fields provided:
1. **Site Name:** student_ftp
 2. **Host / IP / URL:** ceweb2.uml.edu
 3. **Username:** your student email
 4. **Password:** your student email password
 5. **Port** as 990, **Timeout** as 60, **Retries** as 2
 6. **Under Connection:** Select FTPS (SSL DIRECT) (*we use FTP over SSL or TLS)
 7. **Under SSL Options**
Check the boxes for SSL Listings, SSL Transfer and OpenSSL
 8. **Select "Connect."** This should connect to your directory on the ceweb.uml.edu FTP server.



4. Select "Always Accept" on the Certification Information window.

Certificate Information

X

Subject

Organization : University of Massachusetts Lowell
Common Name : ceweb2.uml.edu
Unit
Email
City/Town
State/Prov : Massachusetts
Country : US

Issued By

Organization : Internet2
Common Name : InCommon RSA Server CA
Unit : InCommon
Email
City/Town : Ann Arbor
State/Prov : MI
Country : US

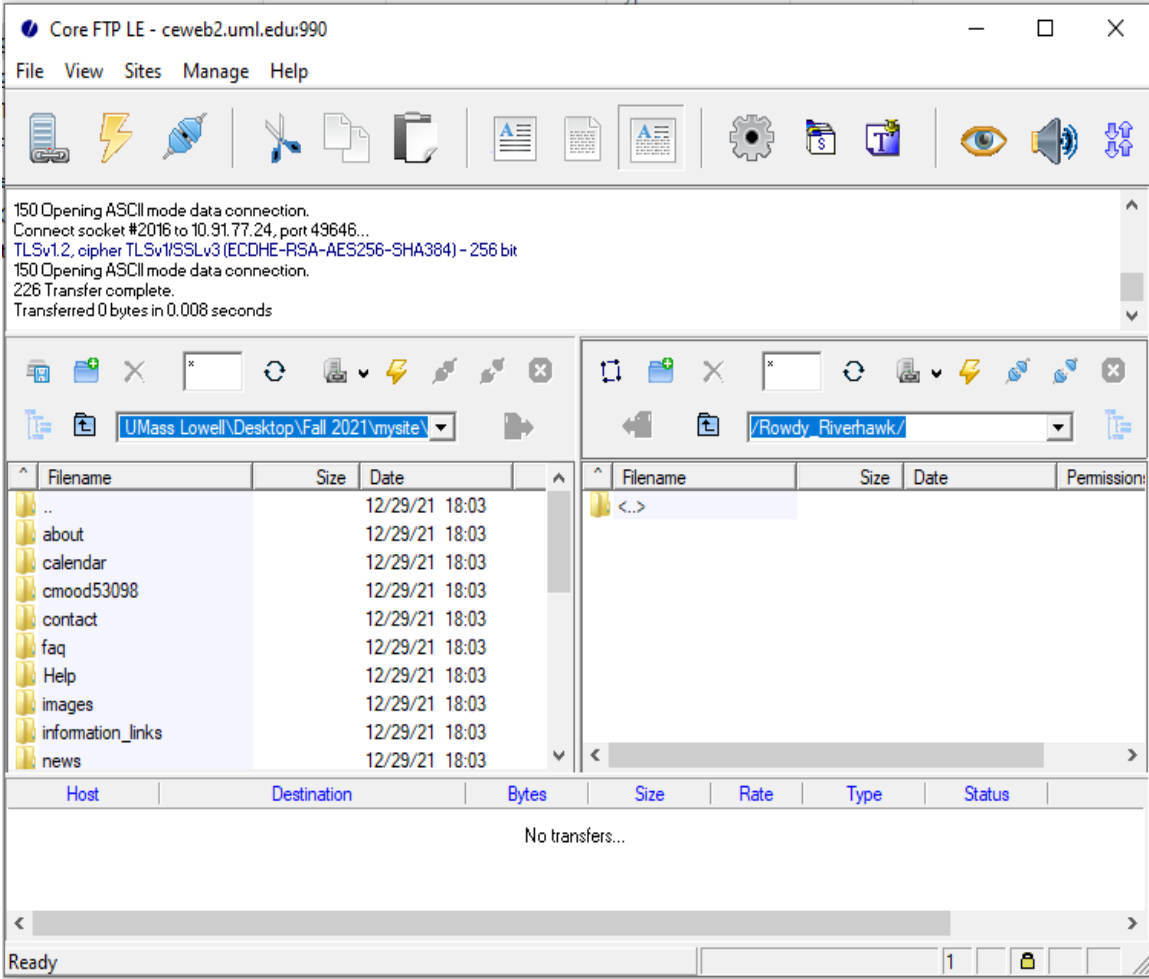
From: August 04, 2022 thru: September 04, 2023

Accept Once

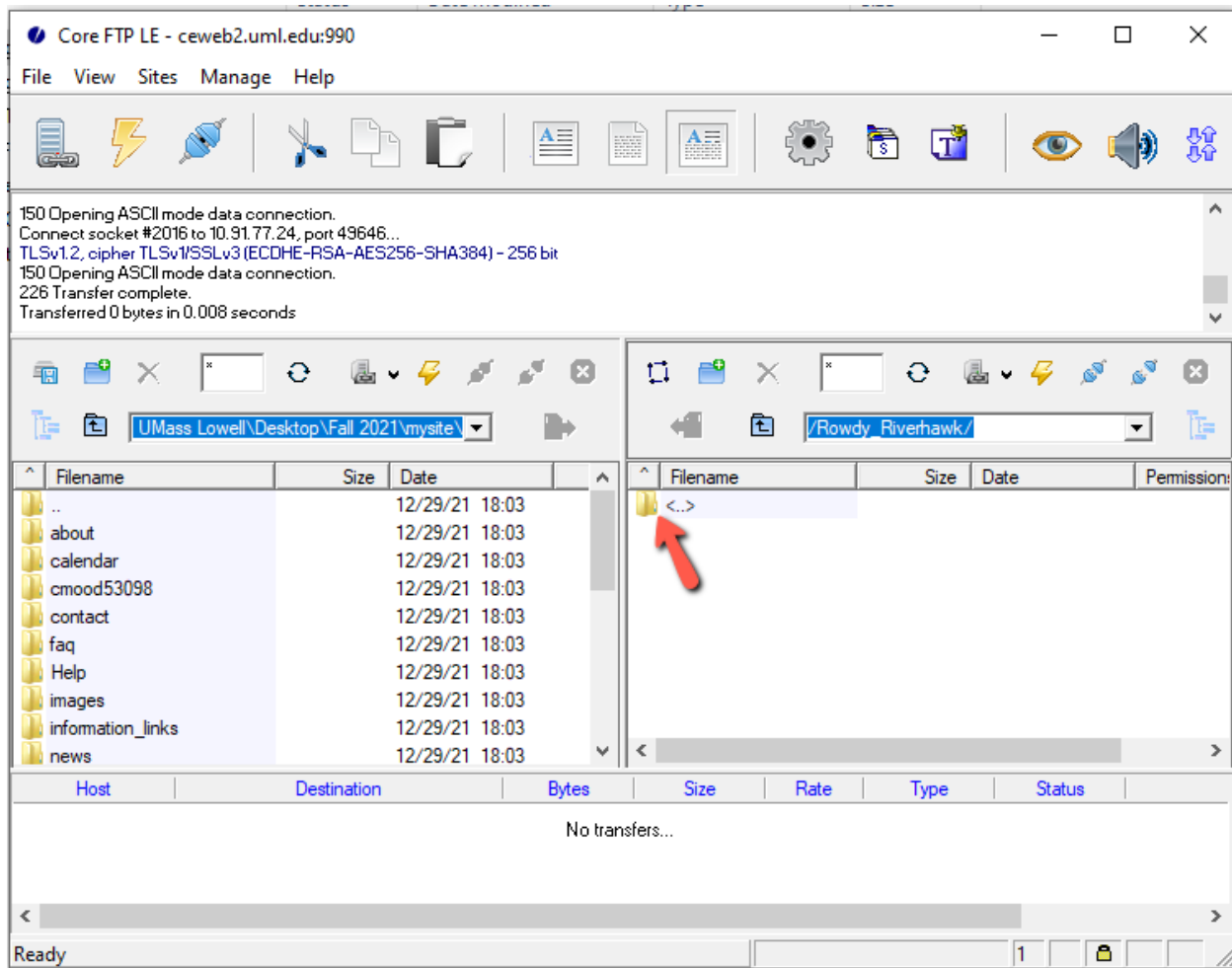
Always Accept

Cancel

5. You should see your directory on the ceweb2.uml.edu FTP server.




*Please note: If your instructor requires you to download files from a course directory on the server, double click the <..> icon in the right side of the window. Select the folder with the number that corresponds to your course (ex. 90.230.031).




Steps to Upload or Download Files to the Web Using Core FTP Lite

Upload Files

1. Start Core FTP Lite. Click to connect to the server.
2. To upload files to the server, select all files you wish to upload from the window on the left and click the right-arrow button: 

Download Files

1. To download* files from the server to your computer, select all files you wish to download from the window on the right.
2. In the left window, select the location on your computer where you wish to save the files.

3. Click the left-arrow button and the files will download to that location: 

*If your instructor requires you to download files from the course directory on the server, select the folder with the corresponding course number before downloading.

How do I view the web pages I've uploaded?

Note: Your homepage must be named "index.htm" or "index.html".

1. Start your web browser (Edge, FireFox, Google Chrome etc.).
2. In the URL box enter a web address using this format:

`https://ceweb2.uml.edu/username*/index.html`

Your *username is the first part of your student email.

Example: If Rowdy Riverhawk is taking a class, they would type:

`https://ceweb2.uml.edu/rowdy_riverhawk/index.html`

Make sure you are on UML VPN before you can view your web pages on the FTP server.

Trouble uploading files?

If you have trouble uploading files, you may speak to your instructor, call 978-934-2467 or email onlinelearning@uml.edu for Tech Support.

Note: You can only access to student FTP if your class requires it.

For more information on core-ftp setup, please visit:

<https://gps.uml.edu/online/tutorial/ftp/win/corelite.cfm>