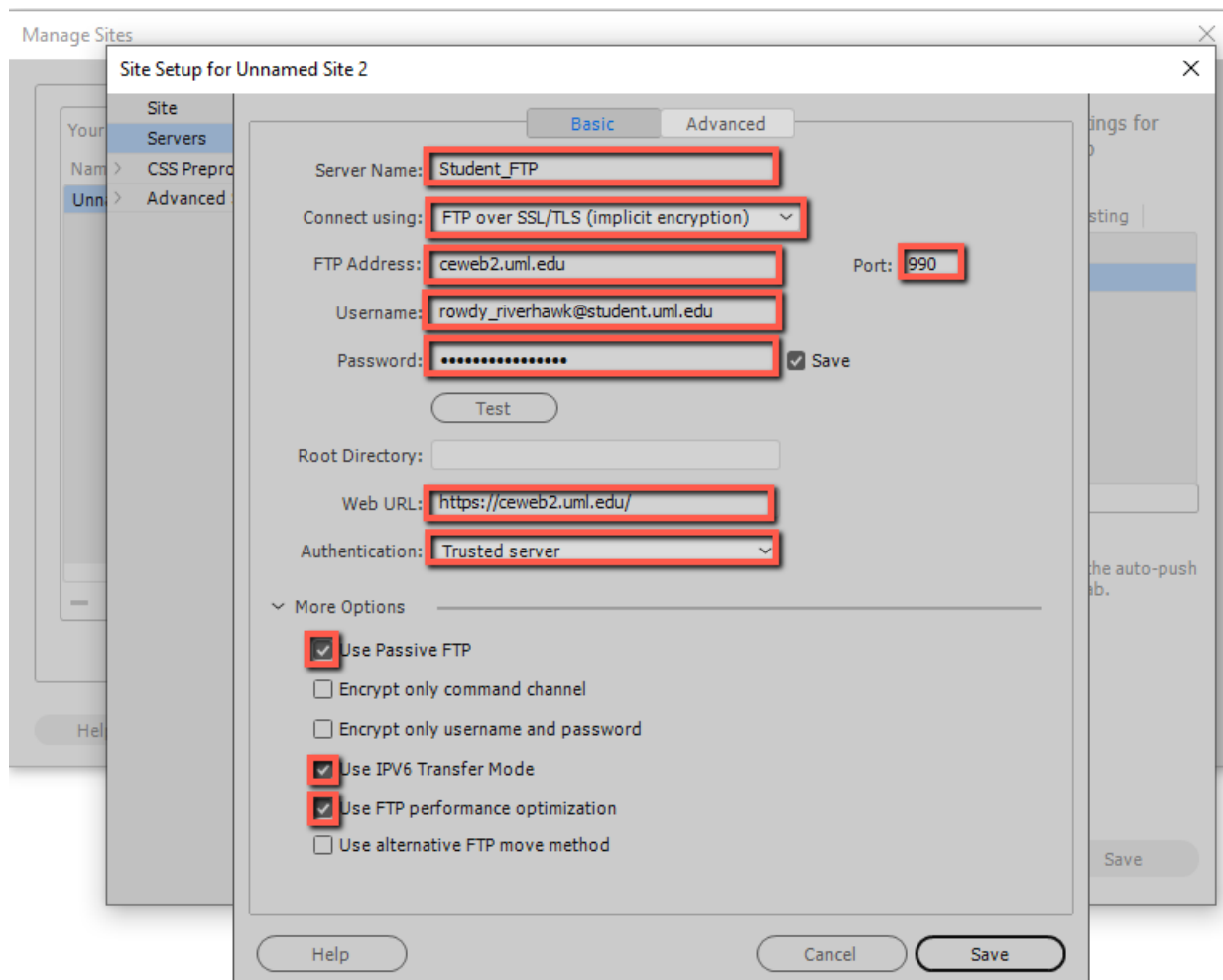


Use Dreamweaver to Connect to Student FTP Server

You must establish a UMass Lowell virtual private network (VPN) connection before connecting to student FTP server (ceweb2.uml.edu). For more information on VPN configuration go to <https://www.uml.edu/it/services/get-connected/remote-access> or contact the help desk at 978-934-4357.

Site Configuration



1. Select "Servers"
2. Click the plus icon and enter the following:
 - o Server Name: Student FTP
 - o Connect using: FTP over SSL/TLS (implicit encryption)
 - o FTP Address: ceweb2.uml.edu
 - o Port: 990
 - o Username: Your student email

- Password: Your student email password
- Web URL: <https://ceweb2.uml.edu/>
- Authentication: [Trusted server](#)

More Options

1. Check "Use Passive FTP"
2. Check "Use IPV6 Transfer Mode"
3. Check "Use FTP performance optimization"

How do I view the web pages I've uploaded?

Note: Your homepage must be named "index.htm" or "index.html"

1. Start your web browser (Edge, FireFox, Google Chrome etc.).
2. Enter the following web address:

https://ceweb2.uml.edu/username*/index.html

*Your username is the first part of your student email before @ sign.

Example: If Rowdy Riverhawk is taking a class, they would type in: https://ceweb2.uml.edu/rowdy_riverhawk/index.html

You must be on UMass Lowell's VPN before you can view your web pages on the FTP server.

Can I get help with this if I'm having trouble?

If you have trouble uploading your files, speak to your instructor, call 978-934-2467 or email onlinelearning@uml.edu for Tech Support.

For more information on core-ftp setup, please visit:

[HTTPS://GPS.UML.EDU/ONLINE/TUTORIAL/FTP/MACX/FTP_DREAMWEAVER.CFM](https://gps.uml.edu/online/tutorial/ftp/macx/ftp_dreamweaver.cfm)

